

26th Annual Conference and Symposium

# KENTUCKY ASSOCIATION OF HOSPICE AND PALLIATIVE CARE

Journey of Compassion: Empathy and Excellence  
in Hospice & Palliative Care

CONFERENCE  
AUGUST  
19-20

MARRIOTT GRIFFIN GATE  
1800 NEWTOWN PIKE  
LEXINGTON.KY



*PALMETTO GBA POST-CONFERENCE: AUGUST 21 at Bluegrass Care Navigators*

## CONFERENCE OVERVIEW

The annual Kentucky Association of Hospice and Palliative Care conference is a 3-day event that brings together more than 200 colleagues and peers in the hospice and palliative care industry from across the Commonwealth to share clinical best practices, updated clinical guidelines and regulations and practice-related guidance to improve patient care at the end of life.

The healthcare industry as a whole is constantly changing. In order to continue to provide the highest quality of care for end of life patients, hospice providers must be innovative and adapt their care practices and programs from clinical to grief counseling to these changes.

The 2024 KAHPC conference will cover a full range of engaging topics and speakers to assist clinicians and administrators with what is going on in and around the hospice and palliative care industry. We hope you will join us for this year's conference that is packed with information to help spark discussion and provide more tools in the toolbox for your organizations to remain sustainable and most importantly provide the high quality care patients deserve.

## LEARNING OBJECTIVES

*After completing this conference, participants will be able to:*

- Develop modern strategies to maintain successful palliative care and hospice programs
- Practice effective clinical interventions to improve patient care experiences
- Prepare for the ever-changing healthcare environment from the regulatory perspective
- Apply holistic care techniques and strategies that enhance end of life outcomes
- Employ better management skills and marketing strategies
- Gain an understanding of diversity and equity in healthcare
- Participants will verbalize their understanding of CMS Health Equity framework and it's implications for hospice care delivery
- Hospice providers will discuss strategies on how to incorporate the CMS Health Equity framework in their hospice operations and care delivery settings

## Partnering for the health and well-being of ALL Kentuckians



**Passport by Molina Healthcare strongly supports the mission of the Kentucky Association of Hospice and Palliative Care (KAHPC), and is a proud sponsor of the 2024 KAHPC Education Conference.**

To learn more about being a Passport provider, call us at (800) 578-0775 today!

## FEATURED PLENARY PRESENTERS



**Marisette Hasan, BSN, RN, Principal/CEO** is a graduate from the University of South Carolina with Bachelors of Science Degree in Nursing. She has worked professionally as an RN since 1981 in various roles: oncology nurse, hospice nurse, clinical manager, home health and hospice administrator and nurse consultant. She currently serves as the Principal/CEO for LifeSprings Consulting Group, LLC. She is passionately engaged in supporting hospice and palliative care providers and policy advocates nationally and regionally through leadership, innovation, public advocacy and regulatory technical assistance.

In addition to her role as an end-of-life care consultant, she serves as Program Coordinator for The SC Coalition for the Care of the Seriously Ill. Through her leadership, the Coalition oversees the My Life My Choices grass roots advance care planning initiative funded by BCBS SC Foundation. This advance care planning initiative provides education for clinicians and SC citizens who live in rural and underserved communities of color. This project also incorporates a technology pilot to store advanced directives and gives access to an E-POST accessible for registered users and a public facing website ([www.mylifemychoices.org](http://www.mylifemychoices.org)).

In addition to her work in SC, Marisette also serves as the VP for Community Action & Policy with CTAC and is a Community Co-investigator for the Equal ACP & Equal Space African American Faith Advance Care Planning Research projects led by Dr. Kimberly Johnson and funded by the PCORI Foundation.

Marisette is married to Bernard Hasan and they have two children, Bernard II and Sarah. She is an ordained elder engaged in her church and the community in mentoring women to advance and be fruitful in every arena of life.

**Patrick M. Harrison, JD** serves as NHPCO's Senior Director of Regulatory and Compliance, with nearly 15 years in the healthcare field focusing on policy, regulation, and advocacy. Before joining NHPCO, Patrick served as health policy director for a health policy and reimbursement consulting firm, where he oversaw the firm's health services division for clients generating billions in annual revenue and provided strategic guidance on regulatory, compliance and reimbursement issues. Prior to his consulting role, Patrick served as Senior Director of Post-Acute Care with the Healthcare Association of Hawaii, where he provided leadership to drive strategic plans for the association's hospice, home health, and post-acute care members. He also worked in various roles at a skilled nursing facility, where he managed many regulatory, compliance, and legislative initiatives, and engaged extensively with hospices, residents, and families to improve care coordination and outcomes. Patrick earned his Juris Doctor, cum laude, from the William S. Richardson School of Law and his baccalaureate degree in anthropology from the University of Hawai'i at Mānoa.

**Stacie Sinclair, MPP** serves as Associate Director, Policy and Health Care Transformation at CAPC. Stacie Sinclair is dedicated to educating federal and state policy makers and key stakeholders on the value of palliative care; raising and standardizing the quality of palliative care delivery; and augmenting palliative care's voice through coalitions and strategic partnerships. Ms. Sinclair served as Co-Chair of the Writing Workgroup for the *National Consensus Project (NCP) Clinical Practice Guidelines for Quality Palliative Care, 4th edition* and managed the efforts of the Serious Illness Quality Alignment Hub, a three-year project funded by the Gordon and Betty Moore Foundation. The latter convened palliative care experts and U.S. health care quality leaders to create requirements and incentives for palliative care access and adherence to standards. She currently serves as Vice Chairperson of the Nebraska Palliative Care and Quality of Life Advisory Council.

Previously, Ms. Sinclair worked at Econometrica as the Implementation Project Manager for the Medicaid Incentives for Prevention of Chronic Diseases (MIPCD) Technical Support project, a \$3.8 million contract with the Centers for Medicare and Medicaid Services (CMS) to test the effectiveness of incentives to promote healthy behavior change among Medicaid beneficiaries. She also provided evaluation support for the Community-Based Care Transitions Program (CCTP). Prior to Econometrica, Ms. Sinclair assisted with grant applications and policy development for the Maryland Department of Health and Mental Hygiene.

Ms. Sinclair received both her MPP and her BA in Social Work from the University of Maryland, Baltimore County. She is a Certified Social Worker (CSW) in the state of Nebraska.





## FEATURED PLENARY PRESENTERS



**Aparna Gupta, DNP, FACHE, CPHQ, CRNP** is Vice President Quality of the National Hospice and Palliative Care Organization. She previously served as Vice President of Clinical Operations, Bundled Payment Solutions, Medicare, and Retirement for UnitedHealth Group (UHG). Prior to joining UHG, Gupta served as Director of Quality, Safety, and Value for the Allegheny Health Network (AHN). Gupta is a board-certified nurse practitioner with more than 20 years of health care leadership experience spanning quality improvement, health care operations, executive leadership, acute care, ageing, complex disease management, clinical services, and implementation of Centers for Medicare & Medicaid Services (CMS) programs.

Prior to her roles with UHG and AHN, Gupta served as a consultant leading an initiative for 34 hospitals and health systems across Pennsylvania to reduce sepsis-related hospital admissions by working across the continuum of care to reduce gaps that lead to sepsis. She previously served as a Senior Nurse Practitioner with the University of Pittsburgh Medical Center, as well as a Registered Nurse and Charge RN at two hospitals in Colorado.

As part of her doctoral work, Gupta successfully implemented an evidence-based collaborative depression care management protocol in a primary care practice, improving mental health screening and interdisciplinary team-based care for populations with complex health conditions. Gupta has been an active leader in several professional organizations, including serving as President of the Pennsylvania Chapter of the Gerontological Advanced Practice Nurses Association. Gupta's focus on outcomes-driven care delivery has led to significant improvements in value-based outcomes across complex and high-risk populations. As a health care quality expert, Dr. Gupta has been invited to speak on topics such as social risk, sepsis readmissions, managing the ageing continuum, and integration of mental health in primary care at events including the Institute of Healthcare Improvement Annual Forum. Gupta has led Transforming Care at the Bedside Teams (TCAB) and served as a master trainer for Agency for Healthcare Research and Quality (AHRQ) and End-of-Life Nursing Education Consortium (ELNEC) projects. Her years of delivering high-quality health care have resulted in the achievement of Fellow status with the American College of Healthcare Executives.



**Turner West, MPH, MTS** serves in dual roles as the President of Responsive Care Solutions, an accountable care organization in the Medicare Shared Savings Program focused on frail older adults, and the Vice President of health policy and strategy for Bluegrass Care Navigators, a nationally recognized leader in the delivery of hospice and palliative care services. Turner has extensive experience bringing leadership and innovation to programs and operations aimed at improving care for the seriously ill. In addition to his work with Responsive Care Solutions and Bluegrass Care Navigators, Turner is a consultant with the Center to Advance Palliative Care and adjunct professor for the University of Maryland for the Master of Science in Palliative Care degree program. In 2016, Turner was named a Health and Aging Policy Fellow and Congressional Fellow with the American Political Science Association. As a fellow, Turner worked in the Department of Health and Human Services with the Office of the Surgeon General on public health approaches to serious illness and with the Altarum Institute on new methods to financing long-term care. In 2019 Turner was appointed by the governor to the newly created Kentucky Palliative Care Interdisciplinary Advisory Council where he serves as the council's chair. Turner has a Master of Public Health degree from the University of Kentucky, a Master of Theology degree from Vanderbilt University and an undergraduate degree in political science from Transylvania University.

THANK YOU to Our 2024 SPONSORS  
We Appreciate Your Support!



**BRONZE SPONSOR**



THANK YOU! 2024 EXHIBITORS



BE SURE TO VISIT OUR EXHIBITORS THROUGHOUT THE CONFERENCE

# Schedule of Events

## Monday, August 19, 2024



		SALON A/B	SALON C	CALUMET/ DARBY DAN	SALON D
		Clinical	Quality/Regulatory	Psychosocial/ Spiritual	Management
<b>Welcome</b>	9:00-9:15	<b>SALONS- A/B/C/D</b> <b>WELCOME</b>			
<b>Opening Plenary</b>	9:15-10:15	<b>View From Washington</b> Patrick M. Harrison, JD <i>National Hospice and Palliative Care Organization</i>			
Break/ Exhibitors	10:15-10:30	Break Time & Visit w/ Exhibitors			
Breakout Session 1	10:30-11:20	<b>Managing Less Common But Troublesome Symptoms In Hospice and Palliative Care</b>  Caren McHenry Martin, PharmD, BCGP <i>Enclara Pharmacia</i>	<b>Legal Authority for Patients: Power of Attorney, Guardian, Living Wills</b>  Lynn Fieldhouse, JD, CHC, SRNA <i>Hosparus Health</i>	<b>G-Force: Not Your Average Summer Day Camp Program</b>  Joe Ferry, MA, LPAT, CT <i>Hosparus Health</i>	<b>Emotional Change Cycle Workshop Session 1</b>  Kathie McBroom <i>Synergy Business Group</i>
<b>LUNCH</b>	11:20-12:30	<b>Lunch &amp; KAHPC Annual Awards</b>			
Break/ Exhibitors	12:30-12:45	Break Time & Visit w/ Exhibitors			
<b>Afternoon Plenary</b>	12:45-1:45	<b>The CMS Health Equity Framework And Hospice Care Delivery</b> Marisette Hasan, BSN, RN, Principal/CEO <i>LifeSprings Consulting Group</i>			
Break/ Exhibitors	1:45-2:00	Break Time & Visit w/ Exhibitors			
Breakout Session 2	2:00-2:50	<b>Beyond The Surface: Strategies for Managing Challenging Wounds and Skin Conditions</b>  Amber Kirchner, MSN, NPD-BC, CHPN, CWCN <i>Hosparus Health</i>	<b>How to Foster Effective Community Partnerships That Lead to Great Results</b>  Marisette Hasan, BSN, RN, Principal/CEO <i>LifeSprings Consulting Group</i>  <b>Daryl Love</b> Diversity, Equity and Inclusion Officer <i>Bluegrass Care Navigators</i>  Deborah May, MBA, BSN, RN Chief Inclusion & Health Equity Officer <i>Hosparus Health</i>  Janelle Lane Rogers, L.C.S.W., ACHP-SW, CEO <i>Heritage Hospice</i>	<b>Where The Rubber Meets the Road: Preparing For And Managing The Death Bed</b>  Dr. Drew Lally, MD, HMDC, FAAHPM  <b>Nathan Schroeder, MA, APBCC-HPC</b>  <b>Amy Hill, LCSW</b>  Jessica Aberli, MSN, RN, NPD-BC, CHPN <i>Hosparus Health</i>	<b>Emotional Change Cycle Workshop Session 2</b>  Kathie McBroom <i>Synergy Business Group</i>
Break/ Exhibitors	2:50-3:00	Break Time & Visit w/ Exhibitors			
<b>Special Session</b>	3:00-3:50	<b>Fireside Chat</b> Patrick M. Harrison, JD Aparna Gupta, DNP, FACHE, CPHQ, CRNP <i>National Hospice and Palliative Care Organization</i>  Eugenia Smither– Moderator <i>Bluegrass care Navigators</i>			
Break/ Exhibitors	3:50-4:00	Break Time & Visit w/ Exhibitors			
Breakout Session 3	4:00-4:50	<b>Medication Use Criteria Updates And Other Exciting Hospice Formulary Management Considerations</b>  Mary Kate Probst, PharmD, BCACP, BCGP <i>Hosparus Health</i>	<b>Choose Your Own Adventure: An Interactive Case-Based Review Of The Latest KY Medical Order For Scope Of Treatment (MOST) Form</b>  Justin Magnuson, MA University of Louisville  Alice Tremaine, MDiv, MSL  Dr. Drew Lally, MD, HMDC, FAAHPM <i>Hosparus Health</i>	<b>Grief and Loss</b>  Marcy Meyer, PHD, MSW, LISW-S (OH), LCSW (KY)	<b>Inclusive Leadership: Leading with Equity and Empathy</b>  Daryl Love, Diversity, Equity & Inclusion Officer <i>Bluegrass Care Navigators</i>

# Schedule of Events

## Tuesday, August 20, 2024



		SALON D	SALON C	CALUMET/ DARBY DAN	SALON A/B
		Clinical	Quality/Regulatory	Psychosocial/Spiritual	Volunteer
Breakout Session 4	8:00-8:50	<b>Effective Use Of integrative Medicine In Hospice Patient Care</b>  <b>Whitney Clay, ATR-BC, LPAT</b> <i>Bluegrass Care Navigators</i>	<b>Sensory Aware Caregiving Through Everyday Occupations For Persons With Dementia</b>  <b>Dr. Elizabeth Rhodus, MS</b> OTR/L, PhD. Gerontology  <b>Celeste Roberts, MS OTR</b> <i>University of KY</i>	<b>HELLO! My Pronouns Are: LGBTQIA2S Inclusive Language in Medical Settings</b>  <b>Ashley S. Holt, MSC</b> Bluegrass Care Navigators  <b>Elizabeth Banks, APSS</b>	<b>Why Certification In Volunteer Administration (CVA) Will Enable You To Be An Amazing Hospice Volunteer Manager!</b>  <b>Jennifer Curtis, CVA</b>  <b>Melanie Hagan, CVA</b> <i>Bluegrass Care Navigators</i>
Break/Exhibitors	8:50-9:00	Break Time & Visit w/ Exhibitors			
Welcome	9:00-9:15	<b>SALONS- A/B/C/D</b>  <b>WELCOME</b>			
Opening Plenary	9:15-10:15	<b>The Current Palliative Care Policy Landscape</b>  <b>Stacie Sinclair, MPP</b> <i>Center to Advance Palliative Care</i>			
Break/Exhibitors	10:15-10:30	Break Time & Visit w/ Exhibitors			
Breakout Session 5	10:30-11:20	<b>Medication Management Of Heart Failure At End Of Life</b>  <b>Caren McHenry Martin, PharmD, BCGP</b> <i>Enclara Pharmacia</i>	<b>Health Care Worker Wellbeing</b>  <b>Stacie Sinclair, MPP</b> <i>Center to Advance Palliative Care</i>	<b>We Honor Veterans Level 5: What You Need To Know</b>  <b>Andrea Arnett, BS, CVA</b>  <b>Tracy Adkins, MSW, CSW</b> <i>Community Hospice</i>	<b>The Art Of Leading Volunteers: Navigating The Complexity Of Hospice Volunteer Management</b>  <b>Laura Harbolt, EdD</b> <i>Hosparus Health</i>
LUNCH	11:20-12:30	LUNCH			
Breakout Session 6	12:30-1:20	<b>METHADONE: Refresher And Updates</b>  <b>Shalini Chhabra, Fellow</b> <i>University of Louisville</i>	<b>The Key Performance Indicator Your Organization is Probably Not Measuring But Google Is</b>  <b>Stephanie Osborne Greene, MHA, Owner</b> <i>Health Bridge Consulting</i>	<b>10 Creative Ways To Maximize Your Bereavement Department</b>  <b>Rachel Swindler, MSW/LSW</b> <i>Community Hospice</i>	<b>Successful Volunteer Management Strategies, A Workshop</b>  <b>Andrea Arnett, BS, CVA</b> <i>Community Hospice</i>  <b>Annette Jones</b> <i>Hosparus Health</i>
Break/Exhibitors	1:20-1:35	Break Time & Visit w/ Exhibitors			
Closing Plenary	1:35-2:35	<b>Hospice Care: How We Got To Now. And Where Do We Go From Here</b>  <b>SALONS- A/B/C/D</b>  <b>Turner West, MPH, MTS</b> <i>Bluegrass Care Navigators</i>			
Break/Exhibitors	2:35-2:50	Break Time & Visit w/ Exhibitors			
Breakout Session 7	2:50-3:40	<b>Navigating Dementia In Palliative And Hospice Care – Supporting The Caregiver</b>  <b>Stephanie Alvey Banks, RN, BSN</b> <i>Hosparus Health</i>	<b>AI and Ethics: Navigating the Future</b>  <b>Eugenia Smither, RN, BS, CHC, CHP, CHE</b> <i>Bluegrass Care Navigators</i>	<b>Good Grief: It's Not A Four-Letter Word</b>  <b>Joe Ferry, MA, LPAT, CT</b> <i>Hosparus Health</i>	<b>Statewide Volunteer Peer Group Meeting</b>  Hosted by <b>Andrea Arnett, BS, CVA</b> <i>Community Hospice</i>



# Palmetto GBA Post-Conference

at Bluegrass Care Navigators  
1733 Harrodsburg Rd, Lexington, Ky.

## Registration Fees and Information

August 21st, 2024– Wednesday

9:30am—2:30pm

Post-Conference for the KAHPC 26th Annual Conference and Symposium

### Course Fee:

\$75.00– Member  
\$125.00– Non-Member

## 2024 Jurisdiction M (JM) Medicare Hospice Workshop Series

Palmetto GBA is pleased to announce our 2024 Hospice Workshop series, titled “Medicare Hospice: Back with More in 2024”. These workshops are designed to equip hospice providers with the tools they need to be successful in Medicare billing, coverage and documentation requirements.

These workshops will provide insight for hospice agency staff at all levels. However, we do suggest that providers who are new to Medicare, or have new staff, attend our online learning courses for beginners at [www.PalmettoGBA.com/hhh](http://www.PalmettoGBA.com/hhh). Basic billing and other online educational resources can be found by accessing the Events and Education topic at the top of the page.

Errors in billing and responding to additional documentation requests can be costly. During the workshop series, Palmetto GBA will provide information related to the most common errors and why these errors occur. We will also provide tips to avoid these errors. Palmetto GBA’s goal is to educate providers on the most up-to-date information and apply skillful techniques to their documentation and billing practices.

### The following topics will be covered during the workshop:

#### Workshop Topics for Part I (9:30am-11:30am)

- ◇ **Hospice Utilization**
  - Length of Stay
  - Disbursement
  - Part B Spending
- ◇ **Continuous Care**
- ◇ **Improper Payments**
  - Comprehensive Error Rate Testing (CERT)
  - Medical Review
  - Appeals

#### Workshop Topics for Part II (12:30pm-2:30pm)

- ◇ **2024 Final Rule Summary**
  - FY 2024 Routine Annual Rate Setting Changes
- ◇ **Hospice Updates**
  - Implement Edits on Hospice Claims (Certifying Physician Edit)
  - Billing Manual Updates
  - Top Billing Errors
  - 2024 Hospice Benefit Component, Value-Based Insurance Design (VBID) Model
- ◇ **Palmetto GBA's eServices Portal**
  - How to Use the eServices' Eligibility Tabs
  - Using eServices' Newest Self-Service Tools
- ◇ **Overview of the Targeted Probe and Educate (TPE) Process**
- ◇ **CERT Overview**
- ◇ **Educational Resources for Hospice Providers**

**LUNCH ON-SITE: 11:30-12:30pm**

Charles Canaan & Marlene Frierson





## 2024 KAHPC Awards Luncheon

Monday, August 19, 2024

The Kentucky Association of Hospice and Palliative Care annually honors staff, leaders, and community supporters who exemplify providing quality end-of-life care to members of our communities. Your paid registration on Monday includes admission to the awards luncheon. *Additional luncheon tickets for those not registered can be purchased at \$35.00 each.*

Please join us in recognizing leaders in our field and our state.

### Hospice Innovator Award

- ◆ For an individual or group who has demonstrated excellence in the use of skills, caring and devotion to patients and colleagues.

### Hospice Distinguished Leader Award

- ◆ For a person demonstrating sensitivity and commitment to the hospice mission and to the promotion of end-of-life care.

### Hospice Champion Award

- ◆ Individuals who have advanced the cause and support of the hospice industry and/or supported those principles and concepts consistent with values underlying the provision of hospice services.

### The Award of Excellence

- ◆ For an individual who has attained repeated outstanding support in hospice end-of-life care through advocacy, partnership, and strengthening public policy.

### Hospice Pioneer Award

- ◆ For an individual who has blazed a trail for others to follow within the hospice profession, education, program development, administration, government or community activities.

### Above and Beyond Award

- ◆ For a person demonstrating exemplary actions of heroism or courage beyond the call of duty within their hospice role.



# REGISTRATION & INFO

Registration Issues: Contact KAHPC- 888.322.7317



**Registration Fees:**

**Monday (MAIN)**

**Tuesday (MAIN)**

**Wednesday  
PALMETTO GBA  
(Post-Conference)**

	Early Bird KAHPC Member (until July 15th)	KAHPC Member (after July 15th)	Non-Member
Monday (MAIN)	\$195	\$210	\$275
Tuesday (MAIN)	\$195	\$210	\$275
Wednesday PALMETTO GBA (Post-Conference)	\$75	\$75	\$125

## CONTINUING EDUCATION OFFERED: *(updated 7/12/24)*

### Nursing

Bluegrass Care Navigators is an approved Kentucky Board of Nursing Provider. The Kentucky Board of Nursing has approved contact hours as follows: KBN# 5-0038-12-2025-685, 6.6 contact hours for Monday, August 19, 2024, and KBN# 5-0038-12-2025-686, 7.2 contact hours for Tuesday, August 20, 2024. Kentucky Board of Nursing approval of an individual continuing education provider does not constitute endorsement of program content. To receive contact hours participants must attend the entire day, evaluate the offering, and provide their Kentucky nursing license number. Some sessions are still pending CE approval.

### Social Work

Bluegrass Care Navigators is approved by the Kentucky Board of Social Work to sponsor continuing education for credential holders (KBSWSP 2024002). Bluegrass Care Navigators maintains responsibility for this program and its content. Contact hours for social workers are approved as follows 6.6 contact hours for Monday, August 19, 2024, and 7.2 contact hours for Tuesday, August 20, 2024. To receive contact hours participants must attend the entire day, evaluate the offering, and provide their Kentucky social work license number. Some sessions are still pending CE approval.



## Hotel Information

**Book By JULY 18th**

**[HOTEL RESERVATION LINK \(Click Here\)](#)**

A block of rooms are being held at the Marriott Griffin Gate Resort in Lexington at the **conference rate of \$159 per night double occupancy.**

Use the link or call the hotel directly for reservations; identify yourself as a Kentucky Hospice Conference participant.

### Marriott Griffin Gate

1800 Newtown Pike  
Lexington, KY 40511  
Phone: (859) 231-5100

## EDUCATION COMMITTEE

**Kendra Marsh, Chair**  
St. Anthony's Hospice

**Turner West**  
Bluegrass Care Navigators

**Liz Fowler**  
Bluegrass Care Navigators

**David Cook**  
Hosparus Health

**Janelle Lane Rogers**  
Heritage Hospice

**Tony Trovato**  
Hospice of Hope

**Deborah May**  
Hosparus Health

**Amber Gensheimer**  
Hosparus Health

**Croswell Chambers**  
Bluegrass Care Navigators

**Brandy Cantor**  
KAHPC



# Journey of Compassion: Empathy and Excellence in Hospice & Palliative Care

Please type or print. *Use a separate form for each registrant.*

First Name: \_\_\_\_\_ Last Name: \_\_\_\_\_  
Organization: \_\_\_\_\_ License #: \_\_\_\_\_  
Credentials: \_\_\_\_\_ Type of Contact Hours Requested: \_\_\_\_\_  
Job Title: \_\_\_\_\_ Email: \_\_\_\_\_  
Address: \_\_\_\_\_  
City: \_\_\_\_\_ State: \_\_\_\_\_ ZIP: \_\_\_\_\_ Phone: \_\_\_\_\_

Registration Fees:	Early Bird KAHPC Member (until July 15th)	KAHPC Member (after July 15th)	Non-Member	Amount Due
<input type="checkbox"/> Monday (8/19 includes 1 Lunch)	\$195	\$210	\$275	_____
<input type="checkbox"/> Tuesday (8/20 includes 1 Lunch)	\$195	\$210	\$275	_____
<input type="checkbox"/> Wednesday (8/21: Post-Conference)	<b>Palmetto GBA</b>	\$75	\$125	_____
<input type="checkbox"/> Additional Award Luncheon Tickets (Monday)	\$35 Each	\$35 Each	\$35 Each	_____
<b>TOTAL AMOUNT DUE (ADD LAST COLUMN)</b>				<b>\$ _____</b>



**Please Note:**

Credit cards are accepted, however, a \$5.00 service fee will be applied per registration.

### Method of Payment

Check (payable to KAHPC)  Credit Card - Circle one: Visa / MasterCard

Credit Card# \_\_\_\_\_ Exp. Date: \_\_\_\_\_

Name on Card (print) \_\_\_\_\_ 3 Digit Code \_\_\_\_\_  
(on back of card)

Billing Address on Card: \_\_\_\_\_

Signature: \_\_\_\_\_

[\*\*HOTEL RESERVATION LINK \(Click Here\)\*\*](#)



Please complete registration form and send payment to:

**Lora Sewell**

Kentucky Association of Hospice and Palliative Care  
202 West Main Street, Frankfort, KY 40601 (new address)

lsewell@mmlk.com | 1-888-322-7317 | F: 1-888-322-7017

You will receive email confirmation of your registration at the above email address.

**\*\*\*No cancellations after August 1, 2024; but you may send another person in your place at no additional cost.\*\*\***



# Kentucky Association of Hospice and Palliative Care 25th Annual Conference and Symposium

# Breakout Sessions

Please mark which Breakout Sessions you plan to attend.

NOTE: You're not locked into this. This is just for planning purposes only.

Please type or print. *Use separate form for each registrant.*

First Name: \_\_\_\_\_

Last Name: \_\_\_\_\_

Organization: \_\_\_\_\_

Email: \_\_\_\_\_

Phone: \_\_\_\_\_



## Monday: BREAKOUT SESSION 1 (10:30am-11:20am)

Clinical  Quality/Regulatory  Psychosocial/Spiritual  Management

## Monday: BREAKOUT SESSION 2 (2:00pm-2:50pm)

Clinical  Quality/Regulatory  Psychosocial/Spiritual  Management

## Monday: BREAKOUT SESSION 3 (4:00pm-4:50pm)

Clinical  Quality/Regulatory  Psychosocial/Spiritual  Management

## Tuesday: BREAKOUT SESSION 4 (8:00am-8:50am)

Clinical  Quality/Regulatory  Psychosocial/Spiritual  Volunteer

## Tuesday: BREAKOUT SESSION 5 (10:30am-11:20am)

Clinical  Quality/Regulatory  Psychosocial/Spiritual  Volunteer

## Tuesday: BREAKOUT SESSION 6 (12:30pm-1:20pm)

Clinical  Quality/Regulatory  Psychosocial/Spiritual  Volunteer

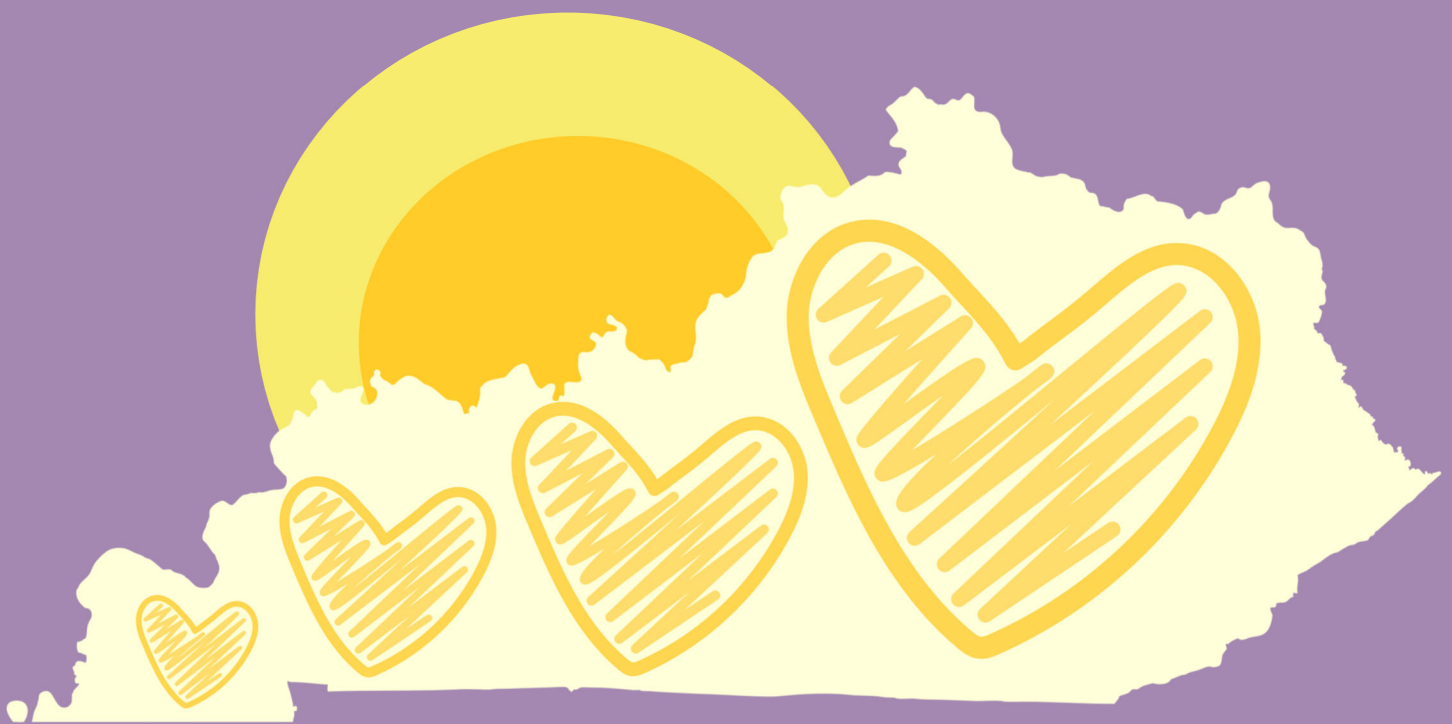
## Tuesday: BREAKOUT SESSION 7 (2:50pm-3:40pm)

Clinical  Quality/Regulatory  Psychosocial/Spiritual  Volunteer



# THANK YOU

## FOR ATTENDING



See You In 2025

202 West Main Street  
Frankfort, KY 40601  
888.322.7317  
[www.kahpc.org](http://www.kahpc.org)

